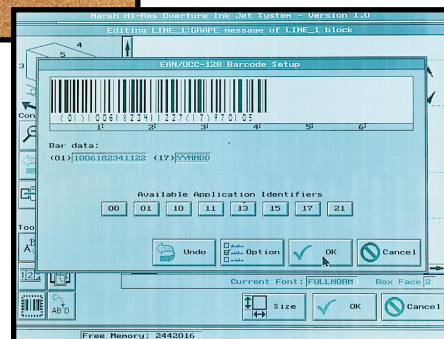


### *We Build Confidence...* *In High-Resolution Large Character Printing*

- **Superior bar code integrity**
- **Countless hours of high-speed, high-resolution performance**
- **Easy to use software**
- **Variety of piezoelectric printheads**
- **Customizable time and date codes**



***Get confident. Contact us today.***

### We Build Confidence...



### The Marsh Overture™ System

provides the flexibility of printing bar codes, logos and other text with a state-of-the-art, graphically driven controller and software enhancements, which ensure the most effortless coding and control available.

### Overture Controller

The Overture controller is easy to use and includes a built-in LCD and keyboard. Other outstanding features include customizable time and date codes, true graphical representation of product, three levels of password protection and more.

### Overture Printheads

A number of printheads are offered, allowing for a variety of styles, multiple lines of text and varying print heights. All printheads feature solid-state, piezoelectric crystal technology (no mechanical moving parts).

The Overture Software package makes bar code generation fast and easy. Overture bar codes comply with industry standards and verify to ANSI specifications.

© 2003 Videojet Technologies Inc. – All rights reserved. Videojet Technologies Inc.'s policy is one of continued product improvement. We reserve the right to alter design and/or specifications without notice. Videojet and Marsh are registered trademarks and Overture and AD1 are trademarks of Videojet Technologies Inc.

CERTIFIED  
ISO 9001  
DOCUMENTED QUALITY



### Specifications

#### Printhead Control Capabilities

12 Printheads  
1-6 Production lines

#### Certifications:

ETL, FCC Part 15A, CE Certified NEMA 12/IP51, ISTA 1A

#### Specifications:

Confirmed to ANSI/UL STD, 1950 and are certified to CAN/CSA STD and C22, 2 NO. 950

#### Printheads

All printheads can print up to 5 lines of print depending on font selected

Single Printhead Character Height: 0.16" to 1.15"  
(0.41 cm to 2.9 cm)

MACH-96 Printhead Character Height: 0.16" to 1.15"  
(0.41 cm to 2.9 cm)

BC-192 Printhead Character Height: 0.16" to 1.15"  
(0.41 cm to 2.9 cm)

MACH-192 Printhead Character Height: 0.16" to 1.15"  
(0.41 cm to 2.9 cm)

BC-256 Printhead Character Height: 0.313" to 1.9"  
(8 mm to 47.6 mm)

BC-352 Printhead Character Height: 0.313" to 1.9"  
(8 mm to 47.6 mm)

**Note: Single and BC-192 heights based on 37° angle maximum**

#### Ink System

Capillary Feed  
Reservoir volume: 13 oz (382 ml)  
Features: Internal filter  
Threaded ink bottle w/plunger mech.  
Low ink sensor

#### Ink Consumption

Single/MACH-96 Printhead  
12.5 million 0.5" (12.7 mm) characters/bottle  
115,000 UCC/EAN-SCC 14 bar codes 62.5% MAG/Bottle

BC-192/MACH-192 Printhead  
6.25 million 0.5" (12.7 mm) characters/bottle  
115,000 UCC/EAN-SCC 14 bar codes 62.5% MAG/Bottle

BC-256 Printhead  
5.0 million 0.9" (22.9 mm) characters/bottle  
95,000 UCC/EAN-SCC 14 bar codes 100% MAG/Bottle

BC-352 Printhead  
4.5 million 0.9" (22.9 mm) characters/bottle  
85,000 UCC/EAN-SCC 14 bar codes 100% MAG/Bottle

#### AD1™ Ink Colors for any porous surface

Black, Red, Blue, Green



800-843-3610 • [www.videojet.com](http://www.videojet.com) • [info@videojet.com](mailto:info@videojet.com)

Videojet Technologies Inc. • 1500 Mittel Boulevard  
Wood Dale IL • 60191-1073 • USA  
Phone: 630-860-7300 • Fax: 630-616-3623

For additional information, contact your local Marsh product distributor at: