

Laser



# e-SolarMark LASER MARKING SYSTEM

Network-Based CO<sub>2</sub> Laser Marking & Coding

Code in stationary or on-the-fly modes on a wide variety of materials.

---

No consumables, low maintenance

---

Compact and modular design

---

Choose from three interface selections

---

Versatile data communication options

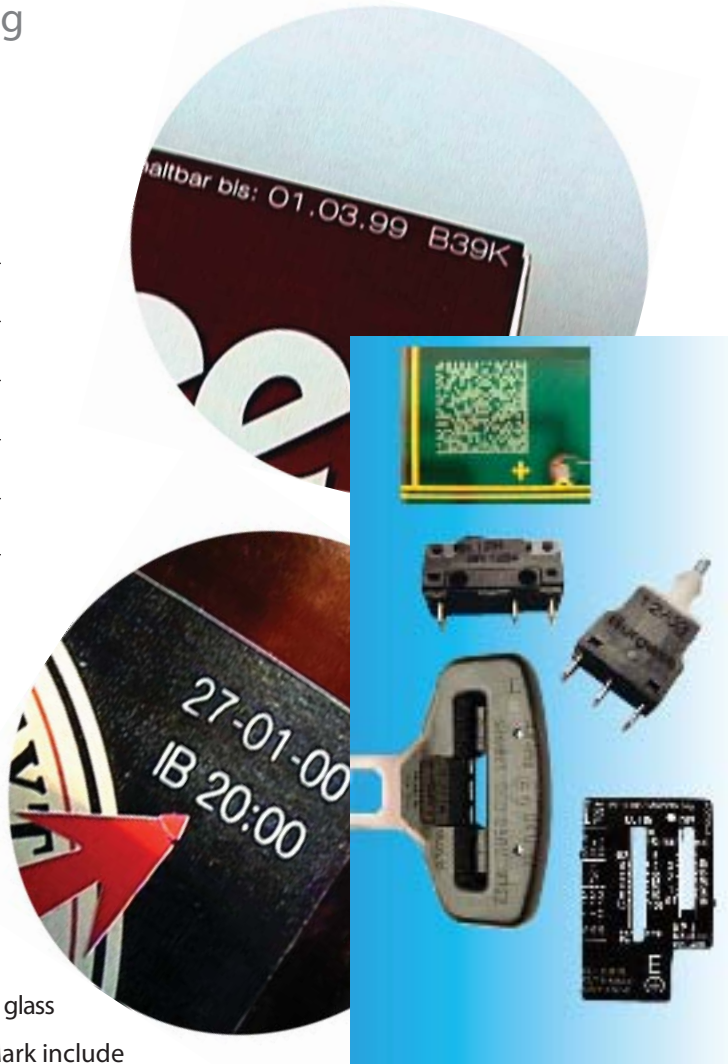
---

21 CFR Part 11 compliant

---

The new e-SolarMark CO<sub>2</sub> laser marking systems are available for standard and washdown applications. With no consumables and an average life of 30,000 working hours, these systems provide efficient coding of alphanumeric texts, dates, timers, serial numbers, bar codes, 2D codes and graphics on a wide range of materials. Right out of the box, Solaris Laser systems can be setup for both stationary and on-the-fly installations.

CO<sub>2</sub> lasers can be used to mark materials such as cardboard, coated metals, glass, leather, paper, plastics, and wood. Applications for the new e-SolarMark include snackfood, beverage containers, cartons, candy and others. As a standard feature the new systems have the ability to turn text/codes 90 degrees and print horizontally or vertically anywhere within the entire marking area.



## Matthews Marking Products

*Ink-Jet Printing • Contact Printing • Indenting • Etching • Inks • Integrated Solutions*

## Technical Specs e-SolarMark

| e-SolarMark CO <sub>2</sub> |   |   |
|-----------------------------|---|---|
| Laser output power*         | 10W   | 30W   |
| Electrical requirements     | 230V 50Hz/115V 60Hz, 1PH  | 230V 50Hz/115V 60Hz, 1PH  |
| Power consumption           | 450W  | 700W  |
| Cooling                     | Air: at ambient temperature 41-104° F (5-40° C)<br>Up to 100% of laser duty cycle<br>Water: at ambient temperature 104-113° F (40-45° C)<br>Or in dirty, dusty, humid environment |   |
| Environment                 | Ambient temperature 104-113° F (5-45° C)<br>Humidity up to 80% non-condensing   |   |
| Enclosure type              | IP 50, NEMA 12 / IP66, NEMA 4 (on request)  |   |
| Dimensions and weight       | Control Unit:<br>13.2" L x 14.2" W x 6.3" H<br>(335 L x 360 W x 160 H mm)<br>18 lb. (8 kg)  | Control Unit:<br>13.2" L x 14.2" W x 6.3" H<br>(335 L x 4360 W x 160 H mm)<br>18 lb. (8 kg) |
|                             | Marking Unit:<br>32.2" L x 5.5" W x 5.5" H<br>(812 L x 140 W x 140 H mm)<br>29 lb. (13 kg)  | Marking Unit:<br>28.5" L x 5.5" W x 5.5" H<br>(726 L x 140 W x 140 H mm)<br>29 lb. (13 kg)  |

\*Sealed CO<sub>2</sub> laser tube, laser gas lifetime - 30,000 hours average.

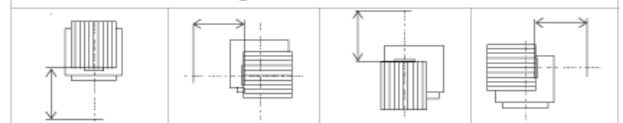
### COMMUNICATION

- USB/RS232/Ethernet 10 Base T
- Shaft encoder input  
(recommended 8196 pulses per marking field length\*\*)
- Product detector input: NPN/PNP - 24V sensor
- Input/output connector for: system interlocks, remote start/stop, ready, marking, fault signals, and additional key switch connection.
- SolMark II job edition software available for Windows 9x, NT, 2000, ME, XP  
\*\*100 mm for LF4 lens

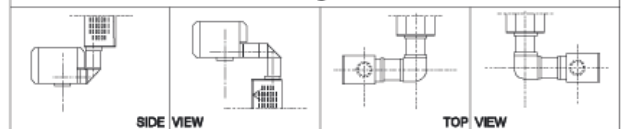
### LANGUAGES

- Different language versions available: English, Chinese, French, German, Spanish, Italian, Dutch, Polish, Swedish, and Portuguese

### Marking Head Orientation



### 90° Beam Bending Modules



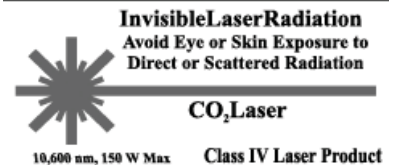
### MARKING SPECIFICATIONS

| Marking speed       | 1000 characters/sec<br>Character height 2mm, lens and material dependent |         |           |           |           |
|---------------------|--|---------|-----------|-----------|-----------|
|                     | Flat field (F-Theta) lens  |         |           |           |           |
| Lens type           | LF2  | LF3     | LF4       | LF5       | LF6       |
| Marking field in mm | 50 x 50  | 80 x 80 | 100 x 100 | 120 x 120 | 200 x 200 |

### OPTIONS

- Touchscreen GUI control unit interface for local job creation and modification
- Alphanumeric keyboard control unit interface for local job modification
- IP 66 / NEMA 4 enclosure
- Scanning head mounting extension modules
- Product detector and shaft encoder
- Fumes / dust extractor (with active carbon filter)
- Chiller for water-cooled systems

**CE and CDRH  
Compliant**



Matthews Marking Products continually improves products. The right, therefore, is reserved to alter the design and/or specifications without giving prior notice

## Matthews Marking Products



Matthews Marking Products  
6515 Penn Avenue, Pittsburgh, PA 15206  
(412) 665-2500 • Fax: (412) 365-2042

Gamlestadsvägen 8, S-415 02 Göteborg, Sweden  
(46) (31) 338 7900 • Fax: (46) (31) 84 51 17

Sold and Distributed Worldwide

